



临沂宏盛铸业有限公司

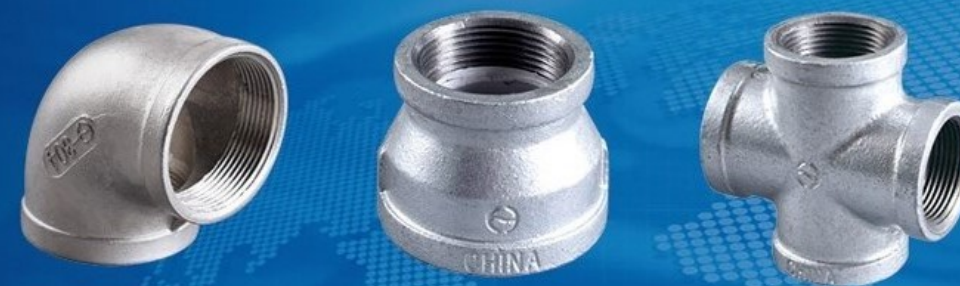
LINYI HONGSHENG FOUNDRY CO.,LTD.

临沂宏盛铸业有限公司

LINYI HONGSHENG FOUNDRY CO.,LTD.

地址：临沂市罗庄区双龙路518号
网址：www.lyhszy.com
电话：0539-8243546 8240767 8243767
传真：0539-8243546

Add: No.518 Shuanglong Road,Luo Zhuang District,Linyi City
Http: // www.lyhszy.com
Tel: 0539-8243546 8240767 8240767
Fax: 0539-8243546



专心·专注·专业 CONCENTRATED · FOCUS · PROFESSIONAL

山东·临沂

百炼成钢 铸就辉煌



宏盛铸业

燃气专用
消防专用
饮用给水专用

创一流企业，造一流产品，送一流服务，铸一流品牌

We, first class manufacturer are dedicated to provide an excellent brand, excellent products and excellent services.



Enterprise Culture

企业文化



一个成功的企业最懂得“天时、地利、人和”方能致胜的道理。

宏盛铸业始终坚持科技为先、人才为本、市场为导、管理为实；
始终坚持诚信勤致、质量第一、成就客户、卓越创新，
在浩瀚商海乘风破浪，扬帆远航。

A successful enterprise is the most know, geographical and human \days\ to the winner.
Macro ChengZhu industry always adhere to the science and technology first, talent, market as
the guide and management for solid;
Always adhere to the attendance to integrity, quality first, clients, outstanding innovation,
In the vast business through wind, sails.

一个团队，一种精神，只为创造一种传承；

一言九鼎，方能立于天地之间，
信守承诺，用心做好每一件事的精神，不为别的，只为创造一种传承。

使命：为人类制造健康、环保、舒适的美好生活

公司在追求生产低碳环保，积极研发适合消费者需求的绿色产品，
为消费者提供最优质、最安全的产品和服务。营造品质高端、低碳健康的美好生活。

精神：诚信 勤勉 合作 创新

诚信，信守承诺，用心做好每一件事

勤勉，勤奋努力，脚踏实地

合作，对内倡导沟通，对外主张互惠

创新，不断学习，不断超越

愿景：争创一流企业，树立知名品牌

我们致力于把每个细节做到极致，坚持不断研发和探索，
以技术为先导，提供最高价值的服务。做行业楷模，创民族精品。

A team, a kind of spirit, just to create a kind of inheritance;

Narain to standing between the heaven and earth,

Keep promise, attentively complete each matter, the spirit of not for other, just to create a kind of inheritance.

Mission: for human health, environmental protection, the comfort of a better life

Company in the pursuit of low carbon environmental protection, actively develop green products for consumer demand,

Provide overall household and consumer experience for consumers, create a high quality, low carbon, personalized happy healthy home life.

Spirit: good faith diligence cooperation innovation

Honesty, keep promise, attentively complete each matter

Diligence, hard work, down-to-earth

Cooperation, advocating communication internally, external advocates mutually beneficial

Innovation, and constantly learning, constantly beyond

Vision: to first-class enterprise, sets up the famous brand

Perfectly, we are committed to put every detail to keep research and exploration,

Take the technology as the forerunner, provides the highest value of service.

Do business model, a national high-quality goods.



Honor Of Qualification 资质荣誉



品质源自专一，科技引领未来。

现在是一个需要大力推进技术创新、文化创新、管理创新的时代。

我们因追求而超越，因超越而前进。

坦对物竞天择，我们奋力耕耘，微笑收获。

一路风雨兼程，我们高瞻远瞩，且行且歌。

From specific quality, science and technology leading the future.

Is now a need to vigorously promote technological innovation, cultural innovation, management innovation era.

We are pursuing and beyond, and by beyond.

Temple of natural selection, we strive to cultivate, smile.

All the trials and hardships, our vision, and line and song.



Company Profile

公司简介



临沂宏盛铸业有限公司（原临沂市宏盛玛钢有限公司）成立于1998年，注册资金3000万元，总投资过亿元人民币。公司地址“中国物流之都”临沂，交通运输十分便利。公司生产厂区占地面积15万余平方米，拥有同行业最先进的生产设备及生产工艺，专业从事锻造铸钢镀锌管路连接件及机械配件、电力金具、汽车配件产品的研究、开发生产。

宏盛铸业有限公司在全国拥有庞大的销售服务网络，可为广大客户提供最优质、最安全的产品服务。公司产品广泛应用于燃气、工业领域、消防、空调、生活供水系统，具有方便、快速安装和节省人工成本等特点。公司已通过ISO9001：2008国际质量体系认证，是规模设计开发、生产组织、物流管理、售前、售中及售后服务的质量保证体系，使每个环节都具有全面的追溯性和可查性。

玛钢管件：宏盛牌玛钢管件是根据GB/T3287—2011，并在先进的工艺、完善的质量保证体系和严格的检测下经机械化生产而成。因此产品坚固耐用，几何尺寸精确、表面光泽、镀锌层均匀、防锈能力强、安装使用方便、准确、灵活、互换性极好。适用于介质200℃的输送燃气、水、油、空气等管路上的连接。

衬塑管件：宏盛牌衬塑管件，通过在玛钢管件内腔注入PPR塑料，既能保证与传统镀锌管一样能承受液体压力和机械冲击力，

具有足够的强度和韧性，又能保证水不直接接触金属，防腐能力极强，不生锈、不结垢、内壁光滑，大大提高了使用寿命和饮用水质量，是新世纪的绿色环保产品，为人类的健康填补了又一个空白，适应了社会的发展。

不锈钢管配件：本公司奥氏体不锈钢产品主要生产设备系台湾引进，采用美国进口蜡料，硅溶胶熔模生产工艺。产品符合ASTM；JIS；DIN和QB1109-91规定等相关标准，采用德国进口SPECTRO MAX直读光谱仪进行材质分析化验，保证产品化学成分符合国家标准。公司不锈钢产品规格种类齐全，数控加工，出口品质，质量上乘。

宏盛牌玛钢管件、衬塑管件、不锈钢管件及配件等多系列产品，目前已销往美国、加拿大、德国、法国、英国、韩国、日本等国家，产品质量深得客户好评。公司产品在燃气、消防、食品、化工、炼油、船舶、医药、车辆和机械装备等领域成为行业首选。产品被多个省市自治区的燃气公司和自来水公司以及政府重点工程指定为唯一品牌。我们将一如既往的以优良的品质，优质的服务竭诚为您服务。热忱欢迎广大新老客户随时随地来公司考察指导工作，

临沂宏盛期待您的光临！



Linyi Hongsheng Foundry Company (grew out of Linyi Hongsheng Malleable Iron Company) was established in 1998 with registered capital of 30 million RMB and the total investment of 100million RMB.

The company located in Linyi- a well-known goods distribution center. Company production plant covers an area of more than 15 square meters. It has the most advanced production equipments and production technology in the same industry. It is specialize in researching, developing and manufacturing in malleable cast iron pipe fittings and mechanical parts, electrical fittings, automobile fittings.

Linyi Hongsheng Foundry co.,Ltd has a huge sales and service network all over China. We can provide the best quality, the most safety products and warmhearted service for customers.

Our products are widely used in industrial fields, fuel gas, air conditioning, water supply system.

Our products have the characteristics of convenient, rapid installation and save labor cost etc.

All our products have passed ISO9001:2008 international quality system certification.ISO9001:2008 is a quality assurance system for scale design and development, production organization, logistics management, pre-sale, sale and after sale service .It makes each part has a comprehensive traceability and accessibility.

Malleable cast iron pipe fitting: Hongsheng Malleable pipe fittings are made upon advanced technology, strict examination system and mechanized production according to GB/T3287-2011. The product is strong and durable ,they has the characteristics of accurate size, smooth surface, uniform galvanized layer, anti-rust capability, convenient installation and good interchangeability. The product is suitable to connect the pipeline which used to transport water, oil, air, gas at 200 °C.

Plastic pipe fitting: Hongsheng plastic pipe fittings are made by inject PPR into the cavity of the ordinary malleable fittings. The plastic pipe fittings can bear the same liquid pressure and mechanical impact as the traditional galvanized pipe fittings. They also have the sufficient strength and toughness.

The Plastic pipe fitting has its own merits: no rust, no fouling and a smooth inner wall. The water is indirectly contact with the metal. Greatly improving the service life and quality of drinking water

It is a green environmental protection product; fill a blank for the health of human beings, to adapt to the social development.

Stainless steel pipe fittings: The stainless steel pipe fittings are made by silica sol mold. The equipment and waxes are imported from Taiwan and American .All the products are complying with ASTM; JIS; DIN and QB1109-91 and other related provisions of the standard. We import SPECTRO MAX direct reading spectrometer from Germany for material analysis to ensure the chemical compositions are in line with national standards. All the machining is made by CNC. We have a complete series of stainless steel pipe fittings; all of them are produced under export standard.

Hongsheng malleable pipe fitting, plastic pipe fitting , stainless steel pipe fittings and accessories, have been sold to American Canada, Germany, France, Britain, South Korea, Japan, and other countries. The qualities of the products have won good comments from our customers.

Our Company's products have been the first choice in the field of building, fuel gas,, fire-protection, foodstuff, chemical industry, oil refining, shipbuilding, pharmaceutical, vehicles and machinery equipment.

Products are designated by many gas and water company as the only brand in many provinces and autonomous regions

Warmly welcome our new and old customers come to visit our company .we will serve you by our excellent quality products and wholehearted service.

Linyi Hongsheng looks forward to your visit!

Production Equipment 生产设备

工欲善其事 必先利其器

公司生产厂区占地面积15万余平方米，拥有同行业最先进的生产设备及生产工艺，专业从事可锻铸铁镀锌管路连接件及机械配件、电力金具、汽车配件产品的研究、开发生产。

To do a good job Must first sharpen his
Company production plant area covers an area of more than 150000 square meters, has the same industry the most advanced production equipment and production technology, specializing in malleable cast iron galvanized pipe fittings and mechanical parts, electrical hardware, auto parts product research, development and production.



Quality Assurance 质量保证



一丝不苟 严格把控

质量是企业发展的生命线，在质量管理方面，公司强化企业质量主体责任，加强质量技术攻关、自主品牌培育。

公司制定生产管理标准体系、质量监管体系、先进质量文化，营造诚信经营的市场环境，走以质取胜的发展道路。成立了由技术研发部、原材料检验部、半成品成品检验部等质量管理小组。由公司专业技术人员担任小组领导，严把质量关。

Product Instructions 产品使用说明

宏盛牌玛钢管件专门针对燃气、消防、饮水领域设计研发，产品性价比高，满足国内不同市场的使用需求，完全符合国家标准 GB/T3287-2011。

【使用环境】

- 所有管件工作温度为不低于 -20°C ；
 $-20^{\circ}\text{C} \sim 120^{\circ}\text{C}$ 温度范围内，最大允许工作压力为 2.5Mpa；
 $120^{\circ}\text{C} \sim 300^{\circ}\text{C}$ 温度范围内，最大允许工作压力为 2.0~2.5Mpa。
- 当在超出规定的压力和温度范围使用时，应与制造方协商。

【材质标准】

- 宏盛牌玛钢管件为符合 GB/T9440-2010 的可锻铸铁材料，材料牌号为 KTH350-10；
- 最低抗拉强度为 $350\text{N}/\text{mm}^2$ ($35\text{kg}/\text{mm}^2$)；
- 最小延伸率为 10%；
- 布氏硬度 $\leq 150\text{HB}$ 。

【锌层】

- 采用热镀锌工艺进行生产，表面镀层均匀、平直光滑、无粘砂、气孔、裂纹。

【螺纹】

- 管件密封管螺纹符合《55°密封管螺纹》GB/T7036 的要求；
- 管件螺纹的轴线夹角偏差在 $\pm 0.5^{\circ}$ ($30'$)。



MALLEABLE IRON PIPE FITTINGS SERIES

玛钢管件系列

超越传统工艺 缔造美好生活



热镀锌45°弯头



热镀锌弯头



热镀锌异径弯头



热镀锌弯头



热镀锌四通



热镀锌四通



热镀锌侧大四通



热镀锌侧大四通



热镀锌侧大四通



热镀锌侧大四通



热镀锌侧大三通



热镀锌异径三通



热镀锌三通



热镀锌快速接三通



热镀锌中大三通



热镀锌管箍



热镀锌内外丝管箍



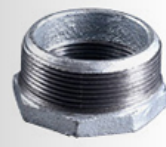
热镀锌异径管箍



热镀锌管帽



热镀锌油任



热镀锌补锌



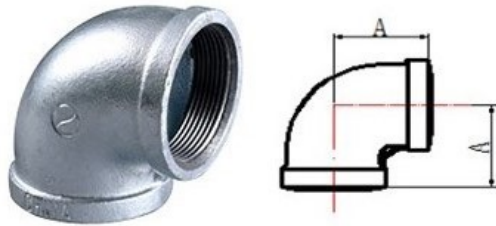
热镀锌丝堵



热镀锌外丝

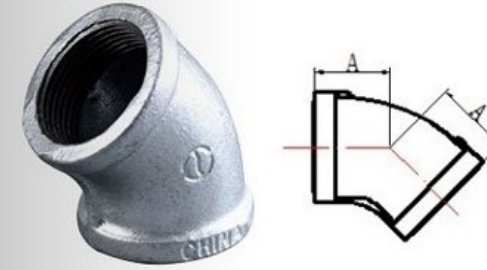


热镀锌快速接头



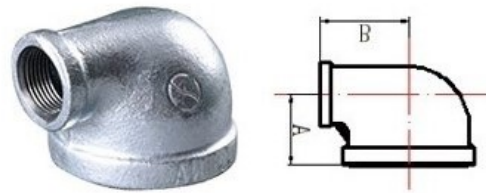
热镀锌弯头

Size/ 规格	Inch	1/2	3/4	1	1 1/4	1 1/2
	mm	15	20	25	32	40
Dim/ 尺寸	A	27	32	37.5	44	47.5
Size/ 规格	Inch	2	2 1/2	3	4	
	mm	50	65	80	100	
Dim/ 尺寸	A	55.5	67	76	96	



热镀锌45°弯头

Size/ 规格	Inch	1/2	3/4	1	1 1/4	1 1/2
	mm	15	20	25	32	40
Dim/ 尺寸	A	21	24.5	27	32.5	35.5
Size/ 规格	Inch	2	2 1/2	3	4	
	mm	50	65	80	100	
Dim/ 尺寸	A	43	49	54	65	



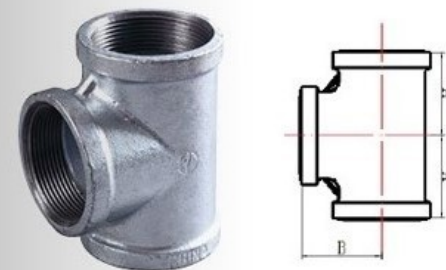
热镀锌异径弯头

Size/ 规格	Inch	3/4x1/2	1x1/2	1x3/4	1 1/4x1/2	1 1/4x3/4
	mm	20x15	25x15	25x20	32x15	32x20
Dim/ 尺寸	A	29	32	33.5	32.5	38
	B	30	33	34.5	37.5	40
Size/ 规格	Inch	1 1/4x1	1 1/2x1/2	1 1/2x3/4	1 1/2x1	1 1/2x1 1/4
	mm	32x25	40x15	40x20	40x25	40x32
Dim/ 尺寸	A	40	36	38	41	44.5
	B	42	41.5	43	45	47.5
Size/ 规格	Inch	2x1/2	2x3/4	2x1	2x1 1/4	2x1 1/2
	mm	50x15	50x20	50x25	50x32	50x40
Dim/ 尺寸	A	37.5	38.5	44	48	51
	B	47.5	48.5	51	54	55
Size/ 规格	Inch	2 1/2x1	2 1/2x1 1/4	2 1/2x1 1/2	2 1/2x2	3x1 1/4
	mm	65x25	65x32	64x40	65x50	80x32
Dim/ 尺寸	A	47	52	55	60	55
	B	60	62	62	65	68
Size/ 规格	Inch	3x1 1/2	3x2	3x2 1/2	4x1 1/4	4x1 1/2
	mm	80x40	80x50	80x65	100x32	100x40
Dim/ 尺寸	A	58	63	72.5	62	65
	B	70	72	75.5	86	86
Size/ 规格	Inch	4x2	4x2 1/2	4x3		
	mm	100x50	100x65	100x80		
Dim/ 尺寸	A	70	77	85		
	B	86	89	93		



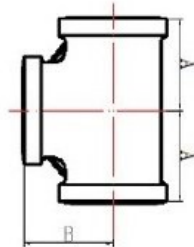
热镀锌内外丝弯头

Size/ 规格	Inch	1/2	3/4	1		
	mm	15	20	25		
Dim/ 尺寸	A	27	31.5	37.5		
	B	40	47	52		



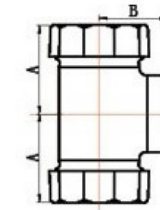
热镀锌三通

Size/ 规格	Inch	1/2	3/4	1	1 1/4	1 1/2
	mm	15	20	25	32	40
Dim/ 尺寸	A	27	32	37	45	47.5
	B	/	/	36	/	/
Size/ 规格	Inch	2	2 1/2	3	4	
	mm	50	65	80	100	
Dim/ 尺寸	A	56.5	67	77	96	
	B	/	/	78	95	



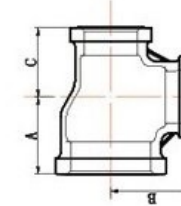
热镀锌异径三通

Size/ 规格	Inch	3/4x1/2	1x1/2	1x3/4	11/4x1/2
	mm	20x15	25x15	25x20	32x15
Dim/ 尺寸	A	28.5	31	34	34
	B	29.5	32	35	38
Size/ 规格	Inch	11/4x3/4	11/4x1	11/2x1/2	11/2x3/4
	mm	32x20	32x25	40x15	40x20
Dim/ 尺寸	A	35	39.5	35	38
	B	40	41.5	42	43
Size/ 规格	Inch	11/2x1	11/2x11/4	2x1/2	2x3/4
	mm	40x25	40x32	50x15	50x20
Dim/ 尺寸	A	41.5	45	38	40
	B	45.5	48	48	48.5
Size/ 规格	Inch	2x1	2x11/4	2x11/2	21/2x1/2
	mm	50x25	50x32	50x40	65x15
Dim/ 尺寸	A	44	46.5	50	40.5
	B	51	51.5	52.5	56.5
Size/ 规格	Inch	21/2x3/4	21/2x1	21/2x11/4	21/2x11/2
	mm	65x20	65x25	65x32	65x40
Dim/ 尺寸	A	43.5	47	51	54.5
	B	57.5	59.5	61.5	61.5
Size/ 规格	Inch	21/2x2	3x1/2	3x3/4	3x1
	mm	65x50	80x15	80x20	80x25
Dim/ 尺寸	A	58	43	46	50
	B	63.5	66	66	67
Size/ 规格	Inch	3x11/4	3x11/2	3x2	3x21/2
	mm	80x32	80x40	80x50	80x65
Dim/ 尺寸	A	54.5	58	62	72
	B	69	71.5	71.5	74.5
Size/ 规格	Inch	4x1/2	4x3/4	4x1	4x11/4
	mm	100x15	100x20	100x25	100x32
Dim/ 尺寸	A	46	54	58	62
	B	80	80	83	86
Size/ 规格	Inch	4x11/2	4x2	4x21/2	4x3
	mm	100x40	100x50	100x65	100x80
Dim/ 尺寸	A	65	68.5	77	82
	B	86	86.5	89	90



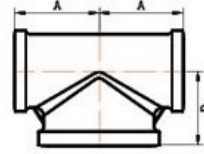
热镀锌快速接三通

Size/ 规格	Inch	1/2	3/4	1	11/4	11/2
	mm	15	20	25	32	40
Dim/ 尺寸	A	44	49	54	64	68
	B	31	35	42	51	51
Size/ 规格	Inch	2				
	mm	50				
Dim/ 尺寸	A	78				
	B	67				



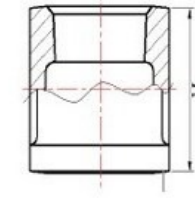
热镀锌侧大三通

Size/ 规格	Inch	11/4x1x1	11/2x1x1	11/2x1x11/4	11/2x11/4x11/4
	mm	32x25x25	40x25x25	40x25x32	40x32x32
Dim/ 尺寸	A	40	41	41	45.5
	B	42	44	45	47
	C	37.5	37	39	44.5
Size/ 规格	Inch	2x1x11/4	2x1x11/2	2x11/4x11/4	2x11/4x11/2
	mm	50x25x32	50x25x40	50x32x32	50x32x40
Dim/ 尺寸	A	43.5	44	46.5	48
	B	50	51	51.5	54
	C	39.5	42	43.5	45
Size/ 规格	Inch	2x11/2x11/2	21/2x1x2	21/2x11/4x2	21/2x11/2x2
	mm	50x40x40	65x25x50	65x32x50	65x40x50
Dim/ 尺寸	A	50	46.5	51.5	54
	B	52.5	59.5	61.5	60
	C	48.5	43.5	47.5	50
Size/ 规格	Inch	21/2x2x2	3x11/4x21/2	3x2x21/2	3x2x2
	mm	65x50x50	80x32x65	80x50x65	80x50x50
Dim/ 尺寸	A	60	54.5	62	64
	B	65	69.5	72	73
	C	58	51.5	60	58
Size/ 规格	Inch	3x21/2x21/2			
	mm	80x65x65			
Dim/ 尺寸	A	72			
	B	74			
	C	68			



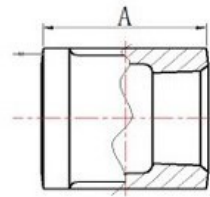
热镀锌中大三通

Size/ 规格	Inch	3/4x1x3/4	3/4x1 1/4x3/4	1x1 1/4x1
	mm	20x25x20	20x32x20	25x32x25
Dim/ 尺寸	A	34.5	40	42
	B	33.5	38	40
	C	34.5	40	42
Size/ 规格	Inch	1x1 1/2x1	1x2x1	1 1/4x1 1/2x1 1/4
	mm	25x40x25	25x50x25	32x40x32
Dim/ 尺寸	A	45	51	47.5
	B	41	44	45
	C	45	51	47.5
Size/ 规格	Inch	1 1/4x2x1 1/4	1x1 1/2x2x1 1/2	1 1/2x2 1/2x1 1/2
	mm	32x50x32	40x50x40	40x65x40
Dim/ 尺寸	A	54	54.5	62
	B	48	51.5	55
	C	54	54.5	62
Size/ 规格	Inch	2x2 1/2x2	2x3x2	2 1/2x3x2 1/2
	mm	50x65x50	50x80x50	65x80x65
Dim/ 尺寸	A	65	72	74.5
	B	60	62	71.5
	C	65	72	74.5



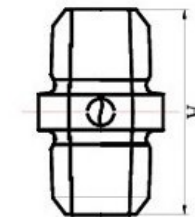
热镀锌异径管箍

Size/ 规格	Inch	3/4x1/2	1x1/2	1x3/4	1 1/4x1/2
	mm	20x15	25x15	25x20	32x15
Dim/ 尺寸	A	38.5	44	44	49
Size/ 规格	Inch	1 1/4x3/4	1 1/4x1	1 1/2x1/2	1 1/2x3/4
	mm	32x20	32x25	40x15	40x20
Dim/ 尺寸	A	49	49	54	54
Size/ 规格	Inch	1 1/2x1	1 1/2x1 1/4	2x1/2	2x3/4
	mm	40x25	40x32	50x15	50x20
Dim/ 尺寸	A	54	54	62	62
Size/ 规格	Inch	2x1	2x1 1/4	2x1 1/2	2 1/2x1
	mm	50x25	50x32	50x40	65x25
Dim/ 尺寸	A	62	62	62	69
Size/ 规格	Inch	2 1/2x1 1/4	2 1/2x1 1/2	2 1/2x2	3x1
	mm	65x32	65x40	65x50	80x25
Dim/ 尺寸	A	67	74	73	76
Size/ 规格	Inch	3x1 1/4	3x1 1/2	3x2	3x2 1/2
	mm	80x32	80x40	80x50	80x65
Dim/ 尺寸	A	76	78	80	74
Size/ 规格	Inch	4x1	4x1 1/4	4x1 1/2	4x2
	mm	100x25	100x32	100x40	100x50
Dim/ 尺寸	A	92	94	94	93
Size/ 规格	Inch	4x2 1/2	4x3		
	mm	100x65	100x65		
Dim/ 尺寸	A	93	94		



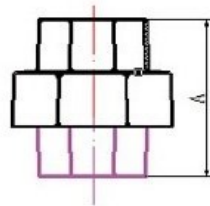
热镀锌管箍

Size/ 规格	Inch	1/2	3/4	1	1 1/4	1 1/2
	mm	15	20	25	32	40
Dim/ 尺寸	A	35.5	38.5	44	49.5	54.5
Size/ 规格	Inch	2	2 1/2	3	4	
	mm	50	65	80	100	
Dim/ 尺寸	A	59	72.5	78	93	



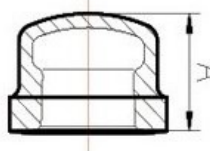
热镀锌外丝

Size/ 规格	Inch	1/2	3/4	1	1 1/4	1 1/2
	mm	15	20	25	32	40
Dim/ 尺寸	A	44	47	52	58	58
Size/ 规格	Inch	2	2 1/2	3	4	
	mm	50	65	80	100	
Dim/ 尺寸	A	66	80	83	95	



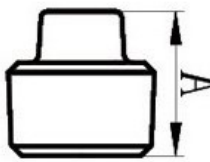
Size/规格	Inch	1/2	3/4	1	1 1/4	1 1/2
	mm	15	20	25	32	40
Dim/尺寸	A	50	47.5	58	62	72
Size/规格	Inch	2	2 1/2	3	4	
	mm	50	65	80	100	
Dim/尺寸	A	78	90	101	118	

热镀锌油任



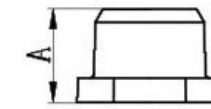
Size/规格	Inch	1/2	3/4	1	1 1/4	1 1/2
	mm	15	20	25	32	40
Dim/尺寸	A	21	23.5	29	29	32
Size/规格	Inch	2	2 1/2	3	4	
	mm	50	65	80	100	
Dim/尺寸	A	35	39	44	50	

热镀锌管帽



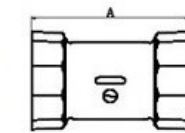
Size/规格	Inch	1/2	3/4	1	1 1/4	1 1/2
	mm	15	20	25	32	40
Dim/尺寸	A	21.8	27	30.5	34.5	36
Size/规格	Inch	2	2 1/2	3	4	
	mm	50	65	80	100	
Dim/尺寸	A	36.5	43	50	55	

热镀锌丝堵



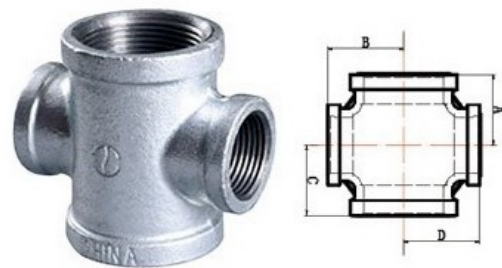
热镀锌补芯

Size/规格	Inch	3/4x1/2	1x1/2	1x3/4	1 1/4x1/2	1 1/4x3/4
	mm	20x15	25x15	25x20	32x15	32x20
Dim/尺寸	A	23	26	26	29.5	29.5
Size/规格	Inch	1 1/4x1	1 1/2x1/2	1 1/2x3/4	1 1/2x1	1 1/2x1 1/4
	mm	32x25	40x15	40x20	40x25	40x32
Dim/尺寸	A	29.5	30	30	30	30
Size/规格	Inch	2x1/2	2x3/4	2x1	2x1 1/4	2x1 1/2
	mm	50x15	50x20	50x25	50x32	50x40
Dim/尺寸	A	33.5	33.5	33.5	33.5	33.5
Size/规格	Inch	2 1/2x2	3x2	3x2 1/2		
	mm	65x50	80x50	80x65		
Dim/尺寸	A	40	45	45		



热镀锌快速接头

Size/规格	Inch	1/2	3/4	1	1 1/4	1 1/2
	mm	15	20	25	32	40
Dim/尺寸	A	92	97	110	116	120
Size/规格	Inch	2	2 1/2	3	4	
	mm	50	65	80	100	
Dim/尺寸	A	128	144	158	170	

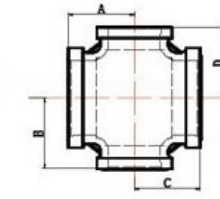


热镀锌异径四通

Size/ 规格	Inch	1x1/2	1 1/4x3/4	1 1/4x1	1 1/2x1/2
	mm	25x15	32x20	32x25	40x15
Dim/ 尺寸	A	31	35	39.5	35
	B	32	40	41.5	42
	C	31	35	39.5	35
	D	32	40	41.5	42
Size/ 规格	Inch	1 1/2x3/4	1 1/2x1	1 1/2x1 1/4	2x1/2
	mm	40x20	40x25	40x32	50x15
Dim/ 尺寸	A	38	41.5	45	38
	B	43	45.5	48	48
	C	38	41.5	45	38
	D	43	45.5	48	48
Size/ 规格	Inch	2x3/4	2x1	2x1 1/4	2x1 1/2
	mm	50x20	50x25	50x32	50x40
Dim/ 尺寸	A	40	44	46.5	50
	B	48.5	51	51.5	52.5
	C	40	44	46.5	50
	D	48.5	51	51.5	52.5
Size/ 规格	Inch	2 1/2x1	2 1/2x1 1/4	2 1/2x1 1/2	2 1/2x2
	mm	65x25	65x32	65x40	65x50
Dim/ 尺寸	A	47	51	54.5	58
	B	59.5	61.5	61.5	63.5
	C	47	51	54.5	58
	D	59.5	61.5	61.5	63.5
Size/ 规格	Inch	3x1	3x1 1/4	3x1 1/2	3x2
	mm	80x25	80x32	80x40	80x50
Dim/ 尺寸	A	51	54.5	58	62
	B	67	69	71.5	71.5
	C	51	54.5	58	62
	D	67	69	71.5	71.5
Size/ 规格	Inch	3x2 1/2	4x1	4x1 1/4	4x1 1/2
	mm	80x65	100x25	100x32	100x40
Dim/ 尺寸	A	72	58	62	65
	B	74.5	83	86	86
	Inch	72	58	62	65
	mm	74.5	83	86	86
Size/ 规格	A	4x2	4x2 1/2	4x3	
	B	100x50	100x65	100x80	
Dim/ 尺寸	Inch	68.5	77	82	
	mm	86.5	89	90	
	A	68.5	77	82	
	B	86.5	89	90	



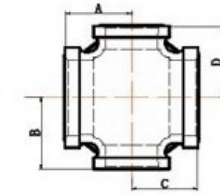
热镀锌四通



Size/ 规格	Inch	1/2	3/4	1	1 1/4	1 1/2
	mm	15	20	25	32	40
Dim/ 尺寸	A	27	32	37	45	47.5
Size/ 规格	Inch	2	2 1/2	3	4	
	mm	50	65	80	100	
Dim/ 尺寸	A	56.5	67	77	96	



热镀锌侧大四通



Size/ 规格	Inch	1 1/4x1x1x1	1 1/2x1x1 1/4x1	2x1x1 1/4x1	2x1x1 1/2x1
	mm	32x25x25x25	40x25x32x25	50x25x32x25	50x25x40x25
Dim/ 尺寸	A	38.5	40	42	42
	B	41	43	48.5	48.5
	C	37.5	39	40	41
	D	41	43	48.5	48.5



STAINLESS STEEL PIPE FITTINGS SERIES

不锈钢管件系列

超越传统工艺 缔造美好生活



不锈钢异径弯头



不锈钢内外丝弯头



不锈钢弯头



不锈钢45°弯头



不锈钢三通



不锈钢竹接



不锈钢油任



不锈钢丝堵



不锈钢外丝



不锈钢补芯



不锈钢异径管箍



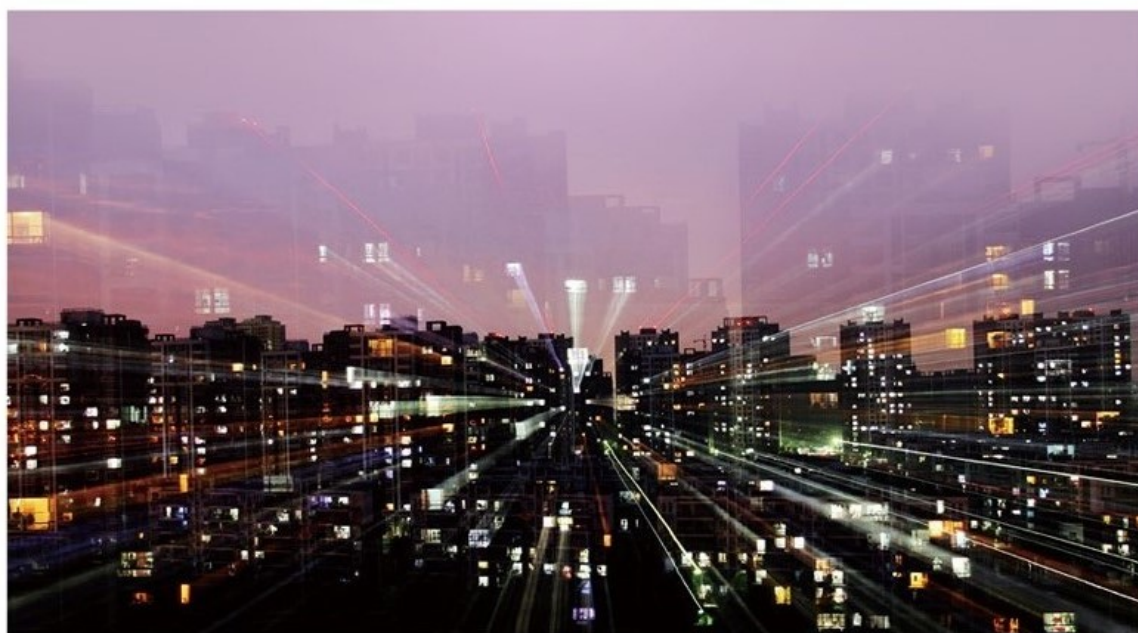
不锈钢管帽



不锈钢管箍

The Cooperation Unit Sample Project

合作单位与样板工程



- | | | | |
|------------|------------|------------|------------|
| 福州华润燃气公司 | 合肥燃气公司 | 扬州金鹰国际购物中心 | 海南东方市人民医院 |
| 厦门燃气有限公司 | 重庆海特燃气公司 | 南京金陵饭店 | 海口第五大道大厦 |
| 济宁华润燃气有限公司 | 新奥燃气有限公司 | 连云港核电站 | 成都132飞机制造厂 |
| 淄博华润燃气有限公司 | 上海世博会 | 盐城市第一人民医院 | 成都自来水公司 |
| 南昌华润燃气有限公司 | 昆明市自来水公司 | 常州市政府大楼 | 绵阳自来水公司 |
| 洪洞华润燃气有限公司 | 上海浦东国际机场 | 威海大水泊国际机场 | 都江堰聚源中学 |
| 沐阳华润燃气有限公司 | 上海虹桥机场 | 福州火车站 | 都江堰自来水公司 |
| 东营华润燃气有限公司 | 上海益流管道燃气公司 | 厦门供水大厦 | 江西省赣州市政府大楼 |
| 临沂华润燃气有限公司 | 上海市地铁9号线 | 厦门自来水公司 | 合肥深燃燃气公司 |
| 中国天伦燃气控股集团 | 杭州闲林核电站 | 广东南海石化 | 扬州火车站 |
| 山东中奥能源集团 | 苏州市相城区燃气公司 | 广州市亚运村 | 江苏悦达起亚汽车总部 |

After-Sales Service

宏盛售后服务

至诚至信 全心全意

山东临沂宏盛铸业有限公司售后服务中心及全国办事处、经销商将指定技术专员对宏盛产品跟踪服务，并承诺对产品实行“质量追踪”服务，如出现质量问题，“宏盛”牌管件，严格按照国家标准生产，退回一只废品，赔偿客户（用户）100元。

“宏盛”产品如出现质量问题，应客户（用户）要求，公司可派技术人员进行现场处理。600公里以内的客户（用户），技术人员在24小时以内到达；超过600公里的客户（用户），在48小时以内达到。

临沂宏盛铸业有限公司

